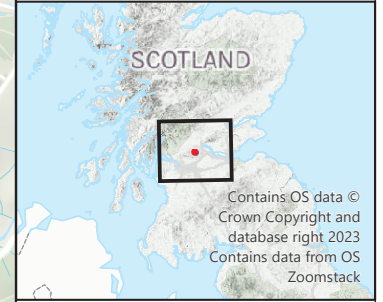


LEGEND

- Site Boundary
- Moorland Breeding Bird Survey Area (500 m Buffer of Site Boundary)
- Breeding Goshawk and Barn Owl Survey Area (1 km Buffer of Site Boundary)
- Black Grouse Survey Area (1.5 km Buffer of Site Boundary)
- Breeding Raptor Survey Area (2 km Buffer of Site Boundary)



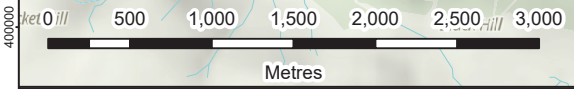
Eurowind Energy™



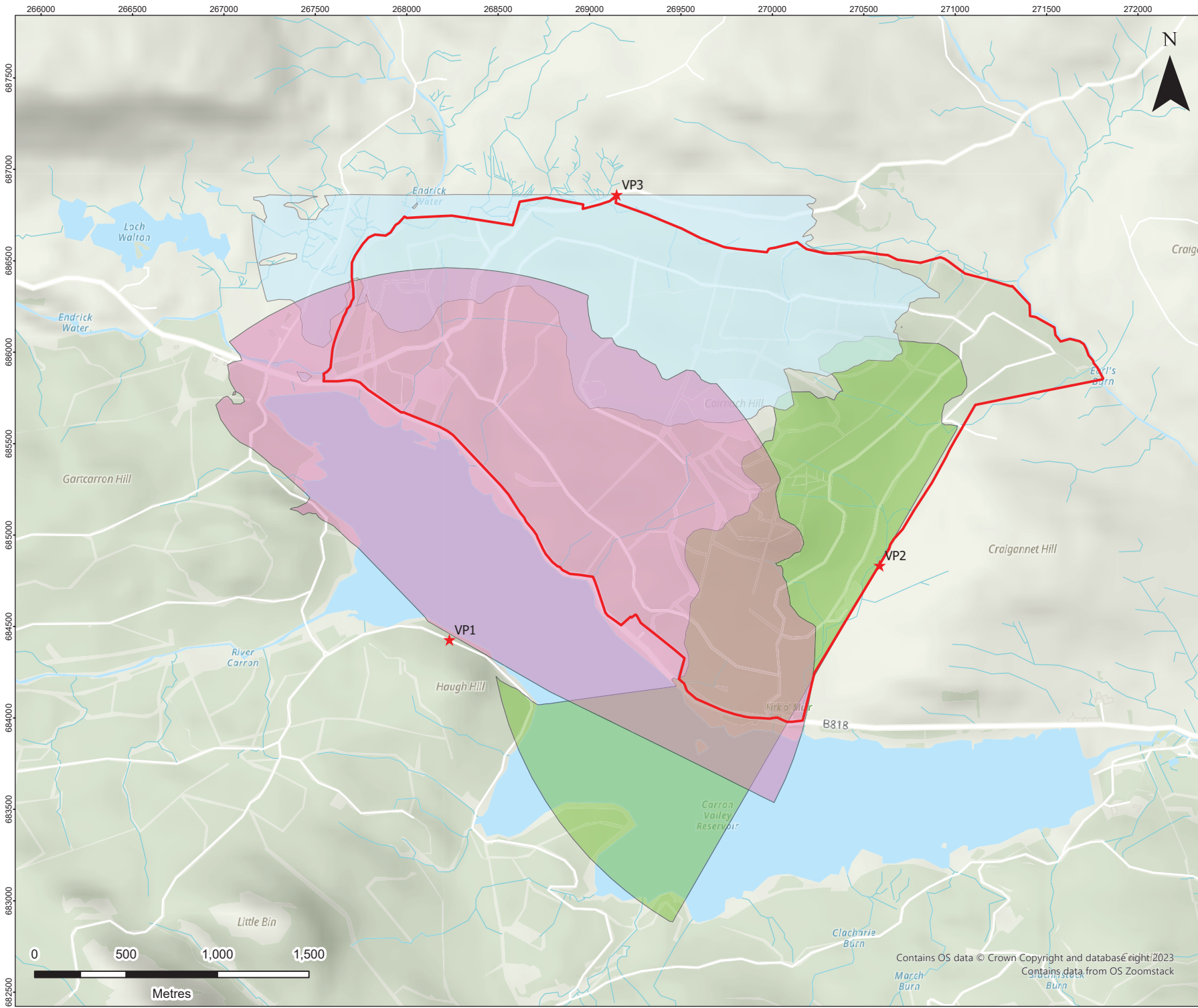
CARRON VALLEY
SCOPING
SITE BOUNDARY AND SURVEY AREAS

FIGURE 17

Scale: 1:655,164 @ A3 Date: JULY 2024

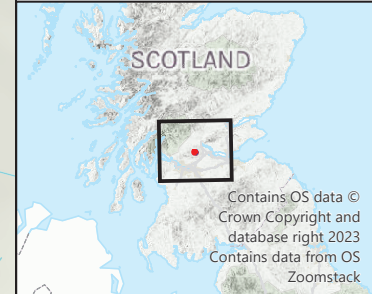


Contains OS data © Crown Copyright and database right 2023
Contains data from OS Zoomstack



LEGEND

- Site Boundary
- ★ VP Locations
- VP3 Viewshed
- VP2 Viewshed
- VP1 Viewshed



Eurowind Energy™

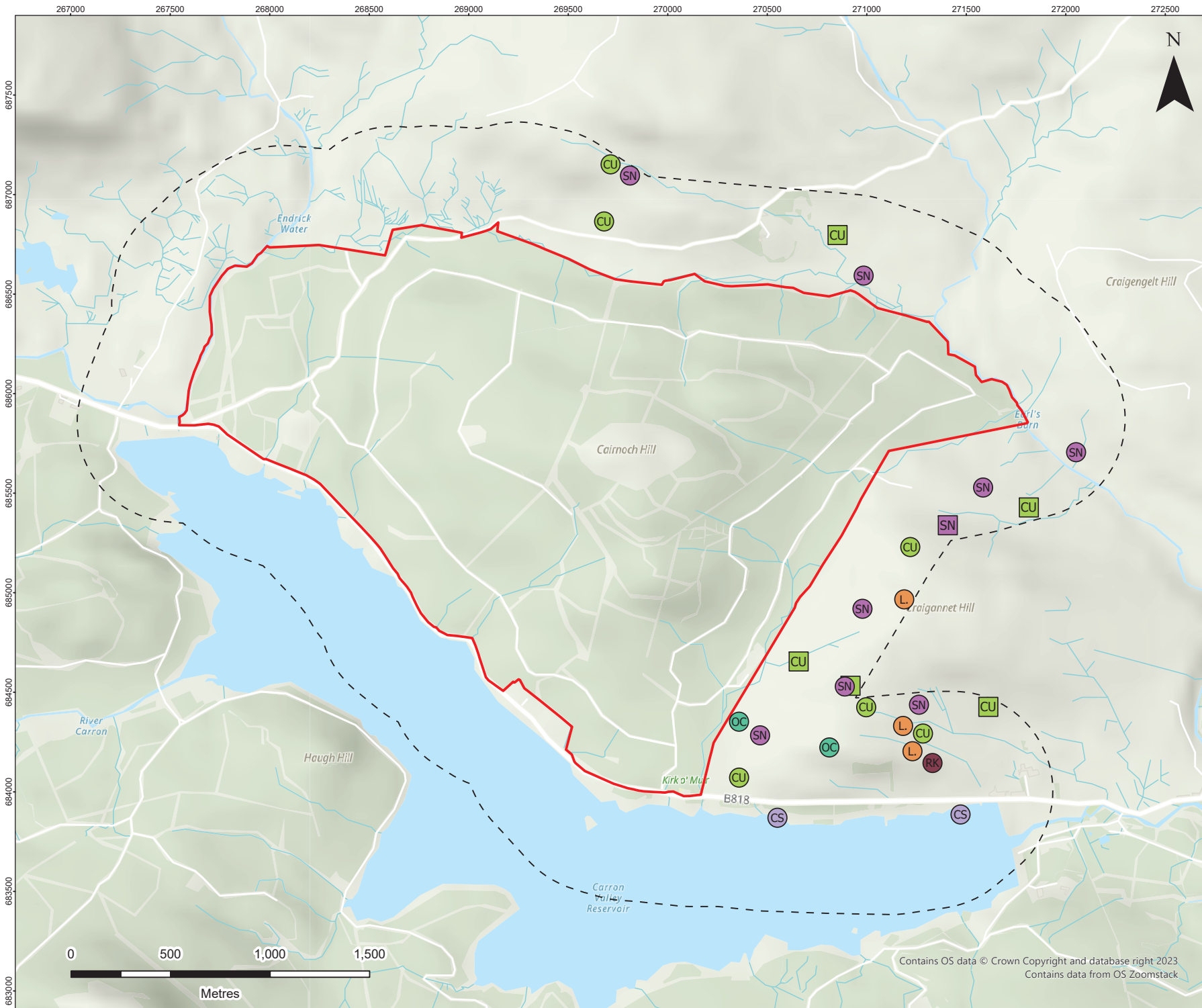


CARRON VALLEY
SCOPING
VANTAGE POINTS AND VIEWSHEDS

FIGURE 18

Scale 1:19,565 @ A3 Date JULY 2024

Contains OS data © Crown Copyright and database right 2023
Contains data from OS Zoomstack



LEGEND

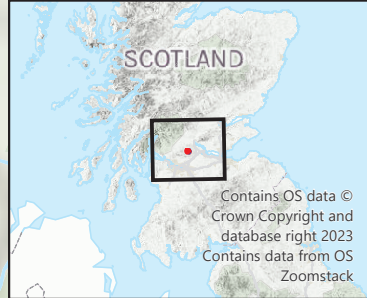
- Site Boundary
- Moorland Breeding Bird Survey Area (500 m Buffer of Site Boundary)

2022 Breeding Wader Territories

- Common Sandpiper
- Curlew
- Lapwing
- Oystercatcher
- Redshank
- Snipe

2023 Breeding Wader Territories

- Curlew
- Snipe



Eurowind Energy™



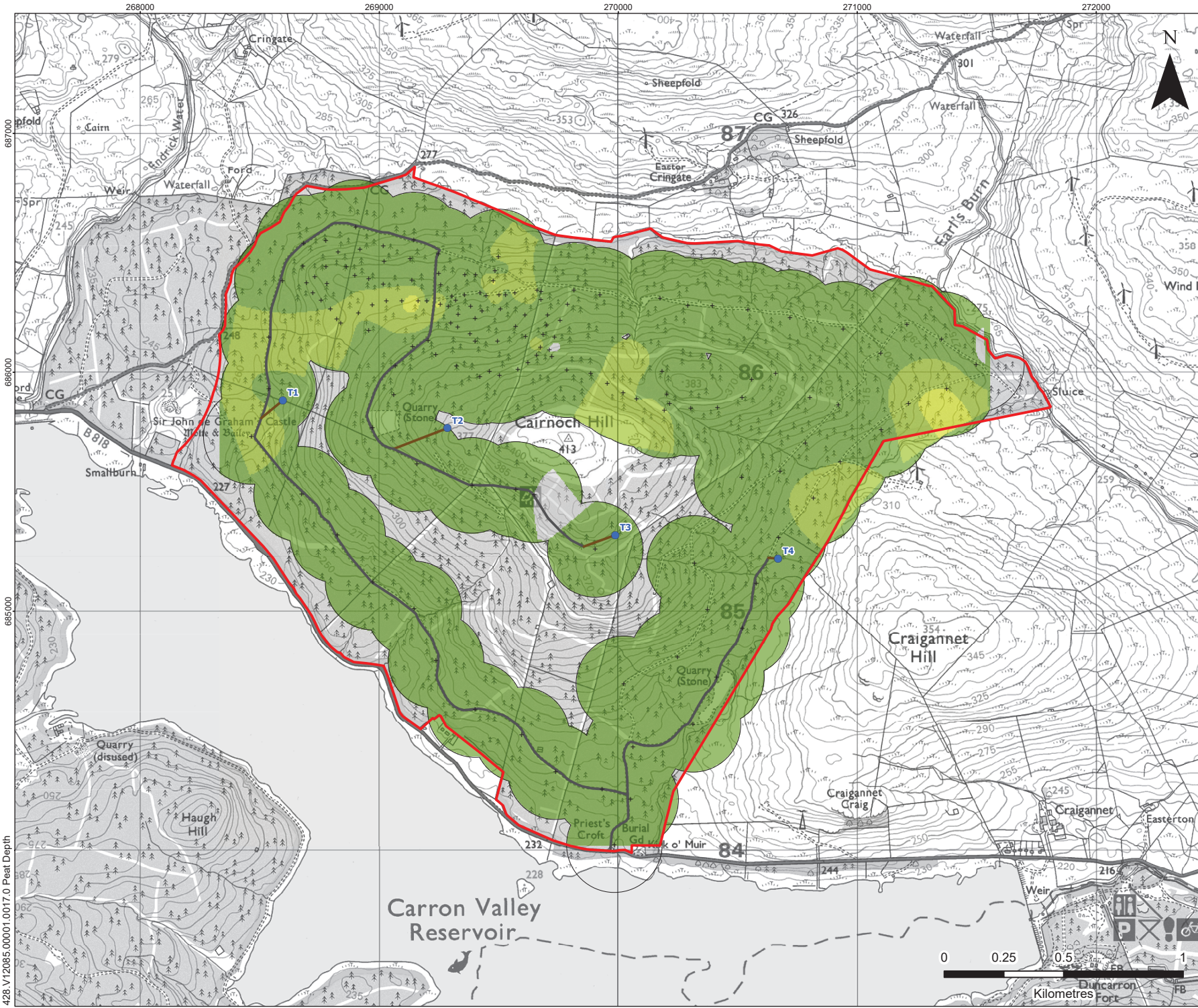
CARRON VALLEY
SCOPING
BREEDING WADER TERRITORIES

FIGURE 19

Scale 1:18,031 @ A3 Date JULY 2024

Contains OS data © Crown Copyright and database right 2023
Contains data from OS Zoomstack



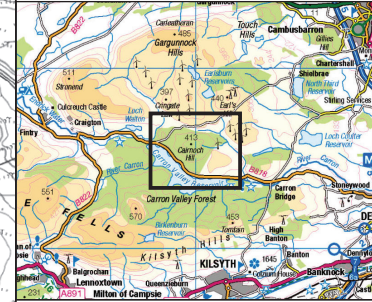


LEGEND

- Proposed Turbine Location
- Site Boundary
- Indicative Proposed Track
- Indicative Track to be Upgraded
- +

Peat Depth (m)

- 0
- 0 - 0.5
- 0.5 - 1
- 1 - 1.5



Eurowind Energy™

SLR

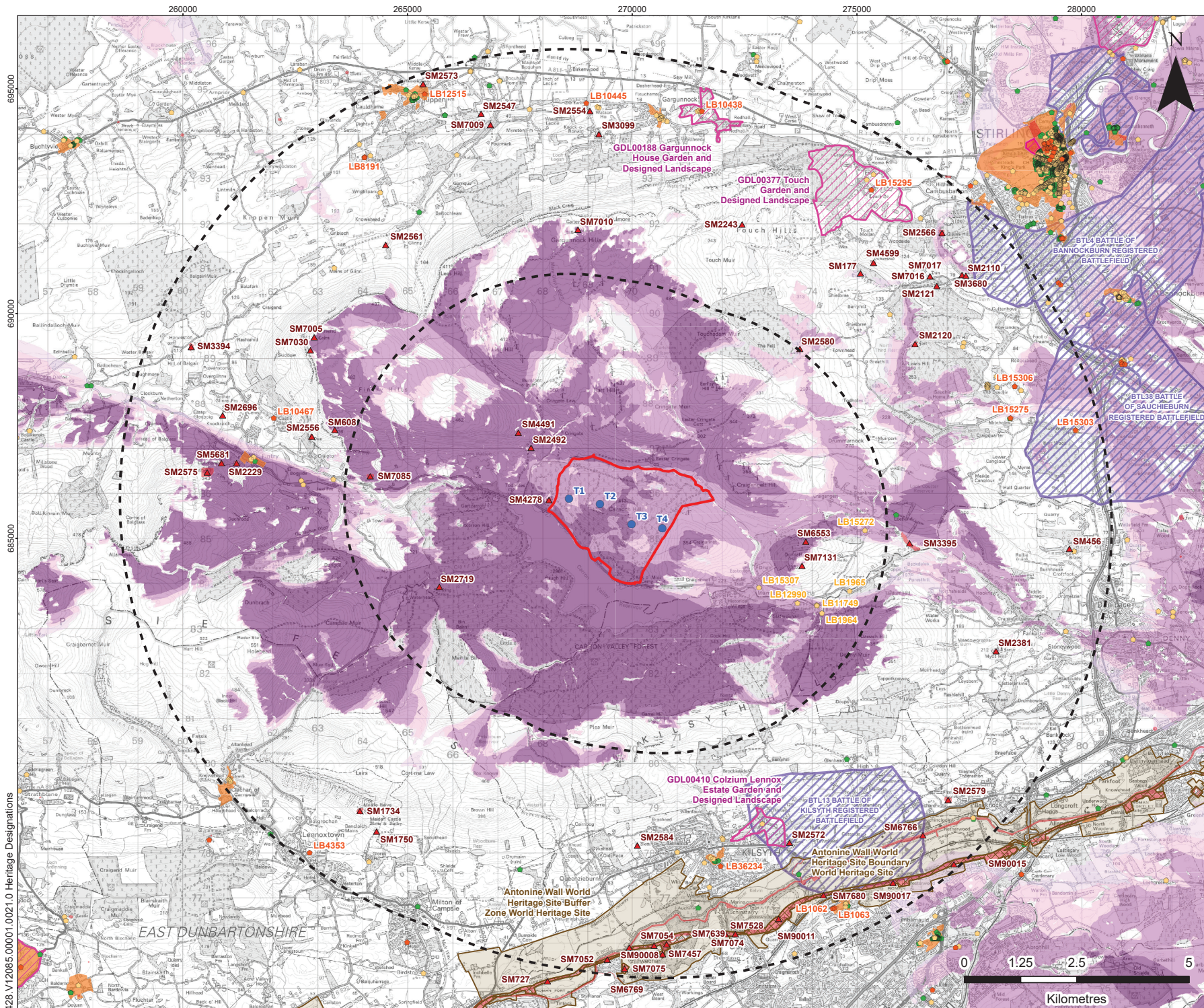
CARRON VALLEY
SCOPING
PEAT DEPTH

FIGURE 20

Scale 1:15,000 @ A3 Date JULY 2024



428_V12085_00001_0017.0 Peat Depth



LEGEND

- Proposed Turbine Location
- ▭ Site Boundary
- - - Proposed Turbine Locations 5 and 10 km Buffer
- ▨ World Heritage Site
- ▨ World Heritage Site Buffer Zone
- ▨ Scheduled Monument
- ▲ Scheduled Monument Centre Point
- ▨ Inventory Garden and Designed Landscape
- ▨ Inventory Battlefield
- ▨ Conservation Area

Listed Building (Category)

- A
- B
- C

Zone of Theoretical Visibility (ZTV) Bare Earth

Number of Turbine Blade Tips Visible

- High: 4
- Low: 1

Note:

This Zone of Theoretical Visibility (ZTV) has been generated using ESRI ArcGIS Spatial Analyst extension. The digital terrain model (DTM) has been derived from OS Terrain 5 (1.5 - 2.5 m RMSE). Earth curvature has been included in the ZTV calculation. The ZTV has been generated from a viewing height of 2m above ground level which falls within recommendations by "Visual Representation of Windfarms" prepared for Scottish Natural Heritage (SNH) February 2017 - Version 2.2.

The use of ZTV mapping at this stage is limited and the following assumptions should be noted:

- The ZTV has been generated using the proposed turbine locations for Carron Valley.
- The proposed turbine blade tip heights that have been used for generating the ZTV are listed below:
 - Blade Tip Height = 200 m
- The ZTV is generated from a bare earth terrain and does not account for the screening effect of features within the landscape such as settlements and woodland. It does not indicate potential visual effects or show the likely significance of effects. It shows potential theoretical visibility only. The ZTV has been produced for the purpose of informing 'on the ground' visual assessment.
- The ZTV colour palette has been specifically developed to assist viewers with reduced sensitivity to red, green and blue light.

Eurowind Energy™



CARRON VALLEY
SCOPING
HERITAGE DESIGNATIONS
FIGURE 21

Scale 1:80,000 @ A3 Date JULY 2024

428_V12085.00001.0021.10 Heritage Designations